

UNIVERSEL® 98 SYSTEM

SPECIFICATIONS

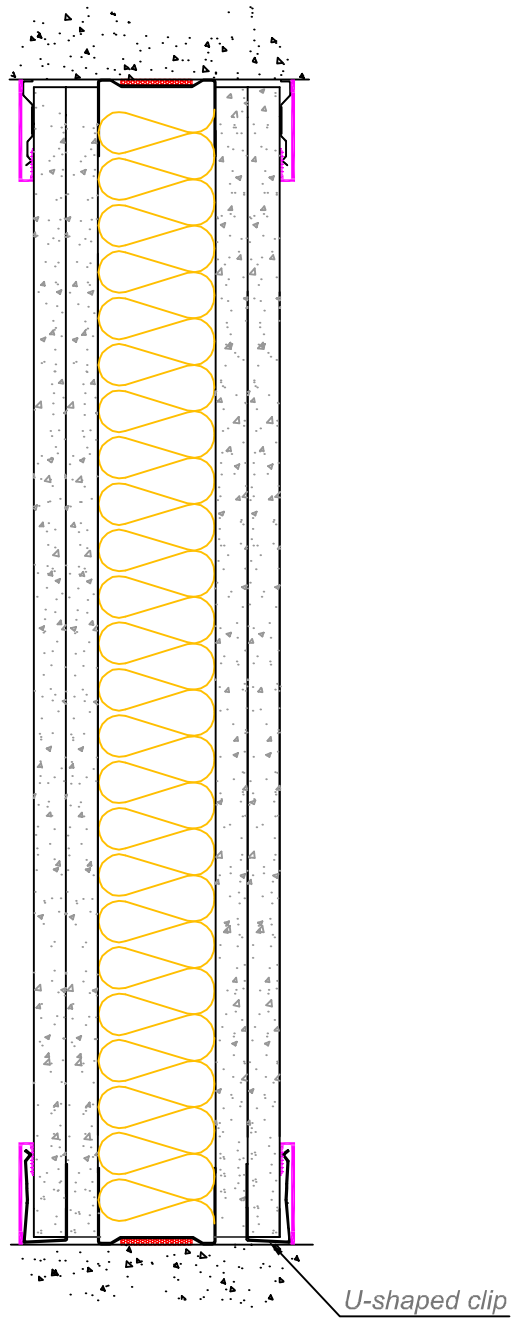
- 1-H fire-rated demountable partition, 98mm-thick, with joint-covers.
- Maximum height (floor to concrete ceiling) : 3300mm (see test report n°RS97-056).
- Inner steel structure (48mm steel rail and studs).
- Outer profiles in aluminium (joint-covers and plinths 40x5mm), silver anodised or RAL powder-coated.
- 4 panels, 13mm-thick plasterboards : inner layer with 2 bare plasterboards, outer layer with 2 vinyle-decorated plasterboards.
- Insulation with rockwool, 45mm thick.
- Solid partition 1-H integrity and insulation (EI60), 1H30 integrity (E90) (test report n°RS97-056).
- Solid partition with 1/2H integrity and insulation door units (EI30) or 1/2H integrity door units (E30). Wooden door : 1 leaf (test report n°RS98-079), 2 even leaves (test report n°RS98-081), 2 uneven leaves (test report n°RS98-082), swing doors (test report n°RS98-083).
- Solid partition with woode-framed glass windows, E30/EI30, E60/EI60, aluminium covers, as per test reports.
- Acoustic performance : Rw=50dB in solid (test report n°2312.6.786).

PICTURES

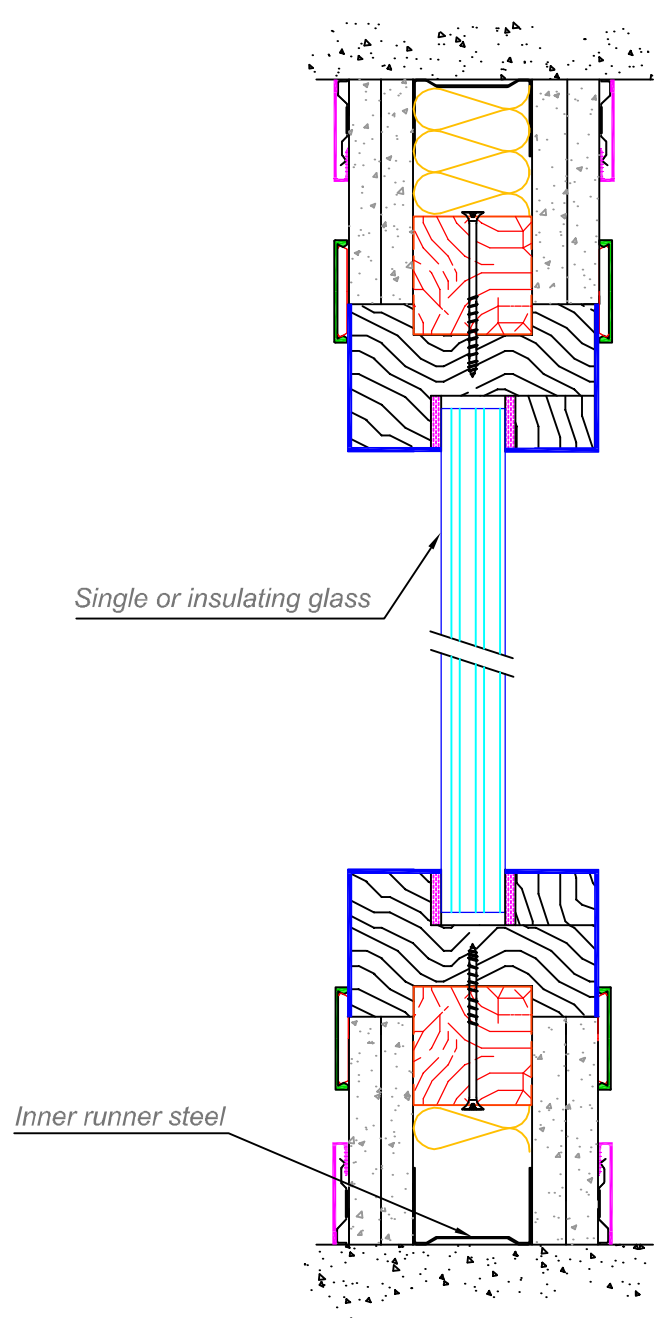


VERTICAL SECTIONS

Full height 1h fire-rated



Glazed wooden frames



HORIZONTAL SECTIONS

Installation of fire-rated Universel 98 partition system (as per our official tests)

Integration of glazed window (EI60) into Universel 98 partition system (as per our official tests)

