

BIPLANE® PARTITION SYSTEM

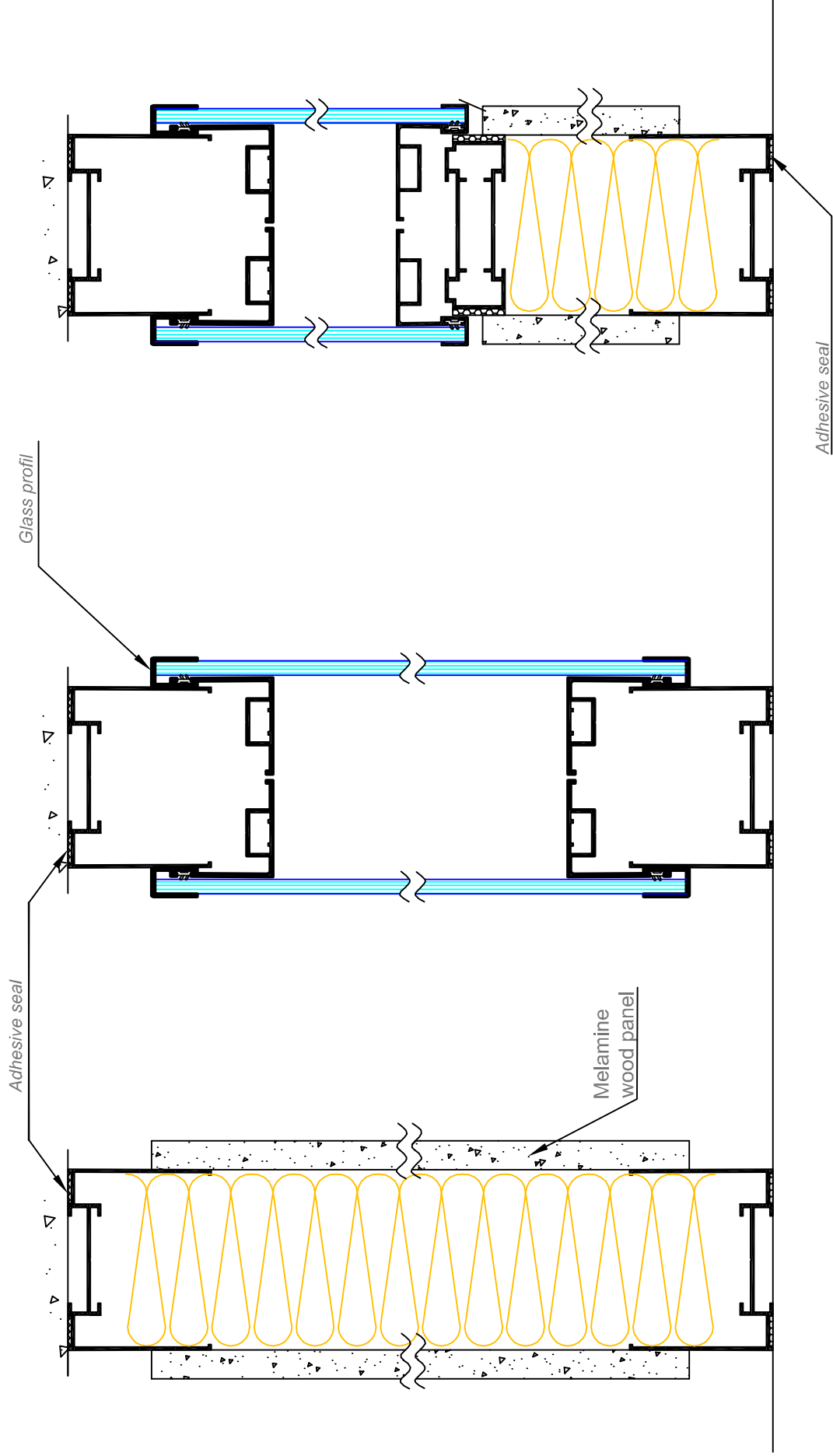
SPECIFICATIONS

- Gap-joint or edge to edge demountable partition system, 100mm-thick.
- Aluminium profiles, silver anodised or RAL powder-coated.
- 75mm thick recessed runners.
- Gap-joint (6mm) or edge-to-edge.
- Solid section : melaminated panels, veneer panels, or real wood panels, 12mm thick, Same finish on all 4 edges. Panels fixed outside the runners, hooked on the vertical studs.
- Glazed sections : glazed half-frames (laminated glass 33/1 or 33/2) fixed on the outer side of the runners, hooked on the vertical studs. Sanded glass and decorative film possible.
- Doorframe profile : square or rounded.
- Swing doors :
 - Laminated wooden door, 40mm thick,
 - Aluminium-framed glass door, single or double glass,
 - Frameless security glass door, 8mm or 10mm thick.

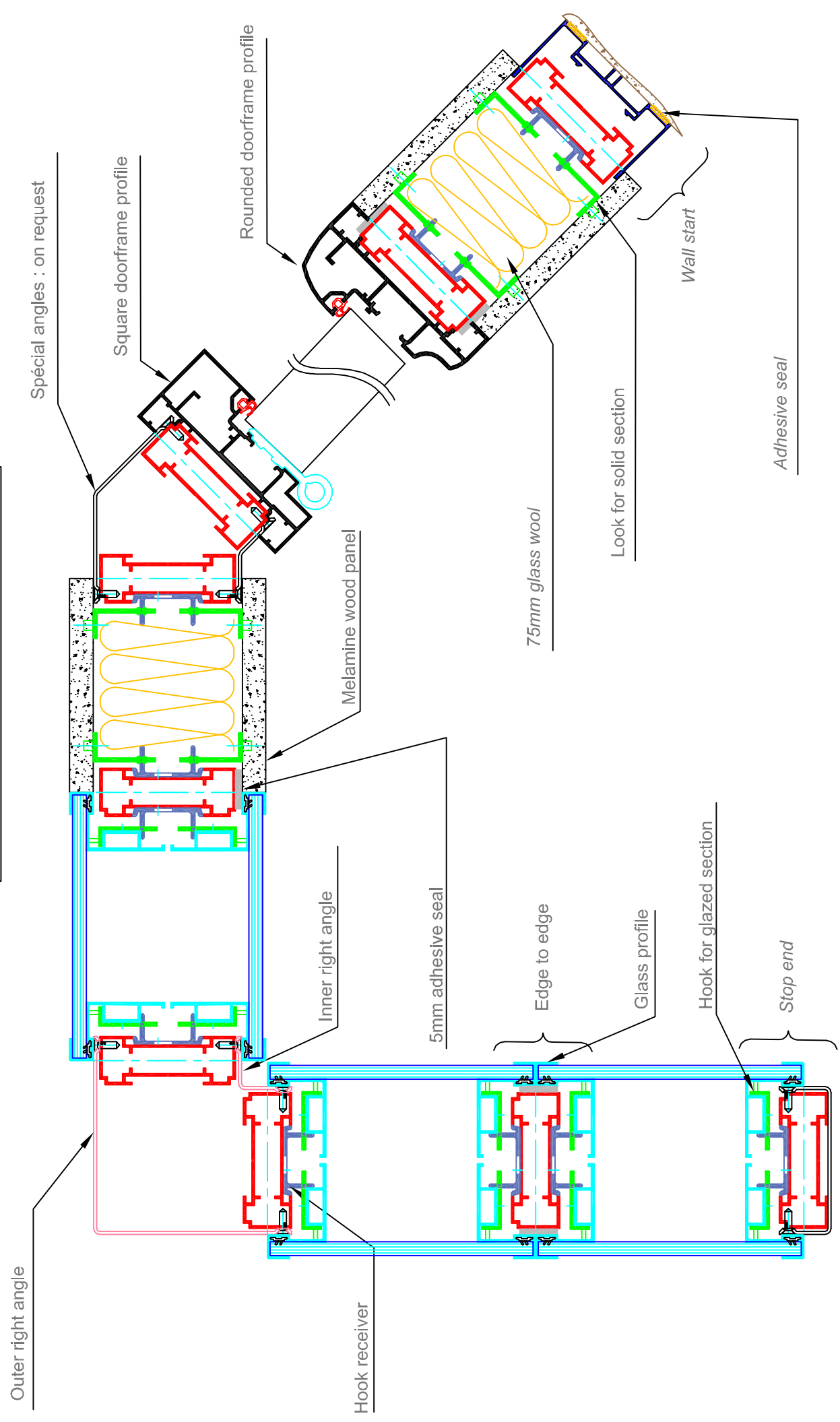
PICTURES



VERTICAL SECTION



HORIZONTAL SECTION



HORIZONTAL SECTION

